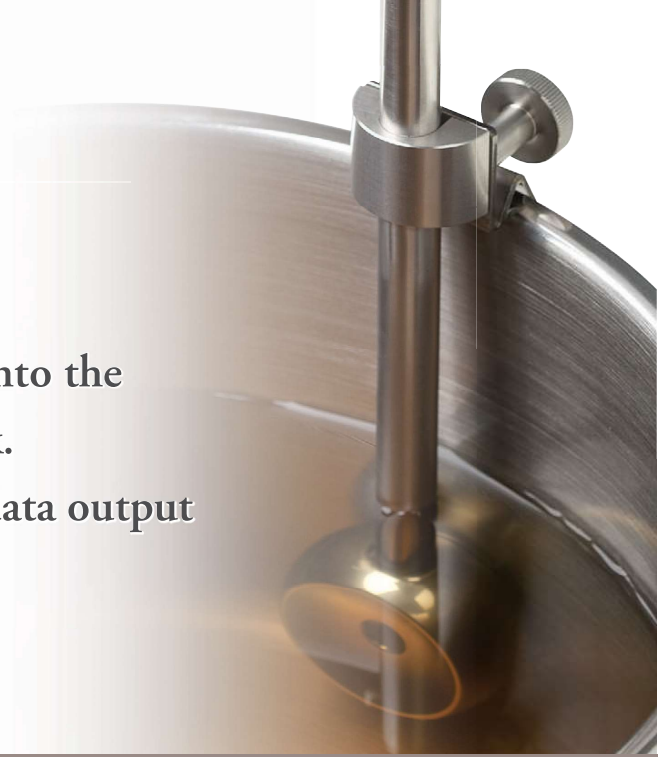


PAN-1DC



Simply clip onto the edge of a tank.
Continuous data output via RS-232C.



No special equipment is needed for installation. The unit can be set-up simply by clipping it onto the edge of a pot or tank. The concentration of industrial oils, agents, cleaning solutions, and foods (liquids) is monitored in real-time. Brix and temperature measurement values are automatically updated every 30 seconds. No need to replace batteries—connecting a single power/RS-232C cable can provide power supply (DC24V) input, as well as Brix value output (via RS-232C).

Specifications

Digital Immersion Refractometer PAN-1DC

Cat.No.	PAN-1DC : 3606 PAN-1DC (M) : 3607 PAN-1DC (L) : 3608
Measurement items	Brix (%), temp (°C)
Measurement range	Brix: 0.0 to 42.0% (ATC), temp: 10.0 to 99.9°C
Resolution	Brix: 0.1%, temp: 0.1°C
Measurement accuracy	Brix: ±0.2%, temp: ±0.5°C
Temperature compensation range	10 to 95°C
Output method	RS-232C output
Transmit data	Temperature, Brix Example) Temperature 20.3°C Brix 19.5% } 20.3, 19.5
Power supply	DC 24V (Allowable fluctuation is ±10%)
Ambient temperature	10 to 45°C
Power consumption	0.6VA
International protection class	IP67 Water resistant (Display: IP65)
Dimensions and weight	PAN-1DC : 8 × 30 × 7.2 cm, 680g (Main Unit only) PAN-1DC (M) : 8 × 40 × 7.2 cm, 710g (Main Unit only) PAN-1DC (L) : 8 × 60 × 7.2 cm, 780g (Main Unit only)

Automatic continuous measurement!

Once START is pressed, the unit continues to take measurements every 30 seconds.



Simply clip onto the edge of a tank.

No special equipment is needed for the set-up.



Rugged construction for reliable long-term performance!

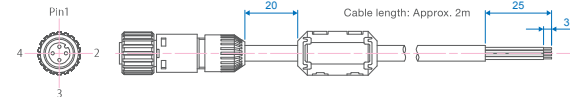
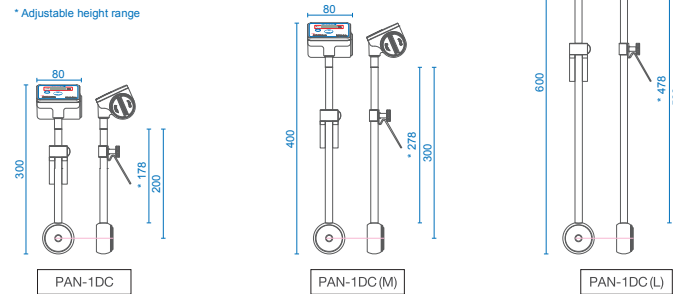
The immersed part is made of SUS 316L stainless-steel.



Dimensions (unit of length: mm)

• Special Order Option •

The PAN-1DC's rod length can be extended up to 120cm in 10cm increments. Contact ATAGO for details.



Connecting the cable to the PAN-1DC's connector located on the side provides power supply (DC24V) input, as well as Brix value output (via RS-232C). A cable with included connector is available as an optional accessory. The cable can be extended to a custom length of up to 15m. For details, please refer to pg. B32.

Connector pin number	Cord color	Signal	Connector pin number	Cord color	Signal
1	Red ●	DC24V input	3	Black ●	GND (DC24V)
4	Red / White ●○	RS-232C output	2	Black / White ●○	GND (RS-232C)