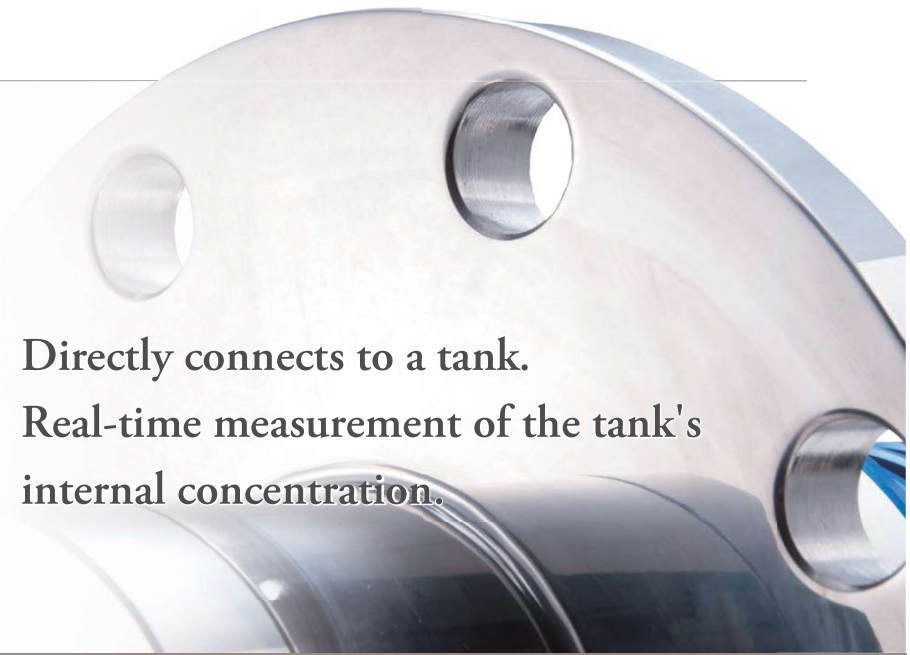


PRM-TANK α



Directly connects to a tank.
Real-time measurement of the tank's internal concentration.

The PRM-TANK α Process Refractometer features a new design of the detection unit, which is to be mounted on the wall of a vessel. It is ideal for a variety of vessel types, such as distillers, condensers, blenders, fermenters, extractors, and filtration tanks. The flat sample stage prevents sample buildups, keeping the prism clean over an extended period of time.

Specifications		In-line Refractometer PRM-TANK α
Cat.No.	3575	
Measurement items	Refractive index (nD), Brix (temperature compensation according to sucrose), concentration (Conc) (User scale), and temperature (°C)	
Measurement range	Refractive index (nD): 1.31700 to 1.51000, Brix: 0.00 to 85.00%, Temperature: -5.0 to 110.0°C	
Resolution	⊕ Refractive index (nD): 0.0001 Brix: 0.1% (Factory default setting) ⊖ Refractive index (nD): 0.00001 Brix: 0.01% * by selection ⊕ Temperature: 0.1°C	
Measurement accuracy	Refractive index (nD): ±0.0001 Brix: ±0.1% * (When measuring standard solutions (sucrose) under stable temperature conditions. Temperature: ±0.1°C	
Temperature compensation range	5 to 100°C	
Display system	Seven-segment LED	
Output method	Recorder output (DC4-20mA), RS-232C output, and alarm output when high- and low-limit values are exceeded.	
Power supply	AC100 to 240V, 50/60 Hz	
Cable	Detection section - Calculation display section (power supply 12V and RS-485) Length: standard 15m (maximum up to 200m)	
Materials in contact with the solution	Prism: Crystal, Prism stage: SUS316L	
Pressure resistance	0.98MPa (detection section)	
Ambient temperature	5 to 40°C	
Power consumption	30VA	
International protection class	IP67 Water resistant	
Dimensions and weight	Detection section: 25×29.7×25cm, 12.3kg Calculation display section: 19.2×10×24cm, 3.3kg	

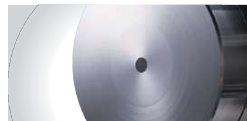
Connect directly to a tank

This model directly connects to a tank and measures the concentration inside the tank in real-time.



Completely flattened detection section

The best possible solution for sample build-up worries! The completely flattened sample stage also enables the unit to endure long periods of measurement.

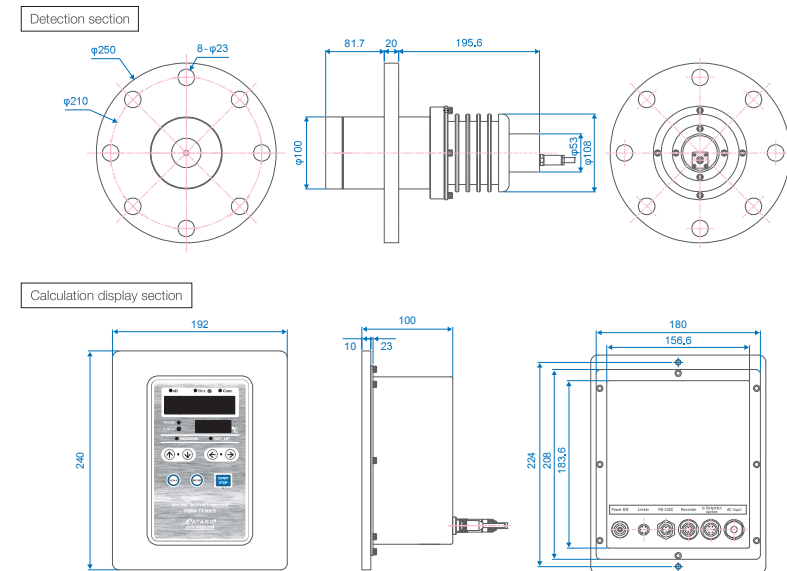


Compatible with all kinds of samples

This model is capable of measuring up to 85.00% Brix.



Dimensions (unit of length: mm)



* For details on the calculation display section, please refer to pg. B15.

* When installing the unit outside, there are certain conditions that must be met, such as keeping the unit out of direct sunlight. Please contact RSCG for consultation.