

QC-501M1F, 502M1F, 503M1F (100~300kN)

Computerized Tensile (compression) testing machine

Standard

ISO 7500-1, JJG475-88, ASTM E4, DIN5122, JIS B7721/B7733, EN 10002-1, EN 1002-2, BS1610, GB228

Industry

Plastic, Textile, Composites, Metal, Architecture



Description

This series is capable for material and product tests that are above 100KN in accordance with standards ASTM, ISO, JIS, and GB. The machine is equipped with Servo motor and precise transimission system and manufactured with rigid and endurable structure to withstand damage. Suitable types of material are metal, composites and material for architecture; a quiet testing environment and accurate test results are guaranteed.

The 7" TFT touch screen is an optional accessory to perform tests in stand-alone mode. The crosshead can be controlled by handwheel to position grips at a minimum scale, to calibrate loadcells and to prevent overload. The speed range is from 0.2 to 375 mm/min and the range conforms to various standards.

Specification

Model	QC-501M1F	QC-502M1F	QC-503M1F
Maximum capacity	300 kN	200 kN	100 kN
Units	Force: gf, kgf, lbf, N, kN, ozf, tonf(SI), ton(long), tonf(short) Pressure: Kpa, Mpa, psi, bar, mm-Aq, mm-Hg		
Force resolution	31 bits		
Force precision	1/50,000		
Test Stroke (w/o grip)	1100mm		
Stroke resolution	0.0001mm		
Space between columns	550 mm (680 mm, 800 mm optional)		
Speed range	0.2 ~ 330mm/min (adjustable by software)		0.2~375 mm/min (adjustable by software)
PC-Port	RJ45(TCP/IP) [optional software]		
Data sampling rate	Max.400Hz		
Motor type	Servo motor		
Features	※Automatic reading of load cell's information ※Automatic reading of displacement sensor's information ※External analog input (voltage or current) ※Zero force setting before test ※Rupture detection ※Force overload protection		
Power supply	3 phase 200 - 240VAC, 30 A	3 phase 200 - 240VAC, 20 A	Single phase 200 - 240VAC, 10 A
Dimension	140 x 66 x 235cm		120 x 60 x 220cm
Weight	1250 kg		800 kg

Optional accessories - Extensometer



QC-557 Short extensometer

For samples with elongation below 50%

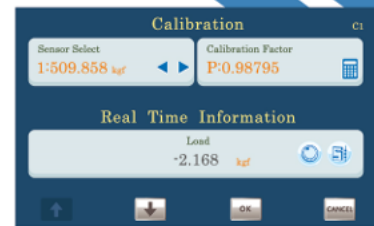


QC-551 Long extensometer

For samples with elongation above 20%

Optional accessories - Display

- A 7-inch TFT colored touch screen
- Chinese, English, Japanese, available
- Force, stress, torque, displacement, time are indicated
- Test setting: Test speed, direction, automatic return, machine stop at break
- Data analysis: Maximum force, interval force, force at break, etc.
- Protection from excessive test stroke, capacity and time
- Up to 50 data can be saved by USB
- It can be restored to factory settings.
- It can be calibrated in stand-alone mode
- Metric/imperial units adjustable
- Supports various signals



Time	Load	Max. Load	Max. Displacement	Strength	Elongation
100.000	100.000	100.000	10.000	10.000	10.000
20.000	10.000	10.000	10.000	10.000	10.000
30.000	10.000	10.000	10.000	10.000	10.000
40.000	10.000	10.000	10.000	10.000	10.000
50.000	99.000	999.000	9999.000	99999.000	99999.000



Software

- It is operated by keyboard and mouse; grip position is controllable by up/down button
- Adjustment of X-Y axis on the graph: curves' point marking, interval, slope, etc.
- Different test patterns available: Hold tensile, special setting of grip movement
- TCP / IP interface (two-way transmission). Machine can be controlled by PC
- Test setting can be saved as module to reduce mistake and errors
- Available in Chinese, English, Japanese, Korean, Spanish, Polish
- Multiple test data can be shown simultaneously on the software
- Tensile, compression, bending, peeling, spring tests available
- The software can show data, graphs or both at the same time
- Compatible with Window 7/8/10
- Sampling rate up to 400Hz
- The software supports various I / O signals
- Unit can be chosen between metric or imperial
- The data table can be modified based on user's preference
- Data can be renamed and formula can be created
- Data processing: store, call, list, statistical comparison, etc.
- Protection from excessive test stroke, capacity and time
- Sample specification can be saved as module for quick use
- Upper and lower limits can be selected to access key data



Peeling Test Report



Date 2018/02/01
Time 10:38:39

Company Information

Name Cometech Testing Machines Co., Ltd.
Address No.49, Ln.39, Lianucn Rd., Fengyuan Dist., Taichung City, 42062 Taiwan(R.O.C.)
E-mail: sales@come-tech.com.tw
Tel: +886-4-25368881
Fax: +886-4-25368883

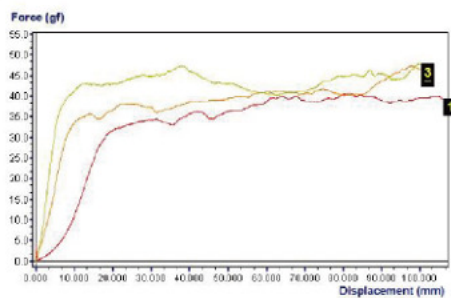
Specification

Test Speed 300 mm/min Width 18.63 mm

Data Table

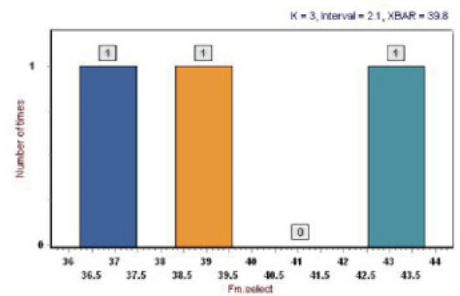
Item1	Fm select	F max select	F peak	Fm select/W	Peak avg
Item2	Unit	Unit	Unit	Unit	Unit
1	36.5	43.2	38.9	9.319	43.5
2	39.3	41.7	40.5	9.321	43.5
3	43.2	47.3	43.9	9.320	45.7
Mean	39.6	43.1	40.5	9.321	43.0

Graph

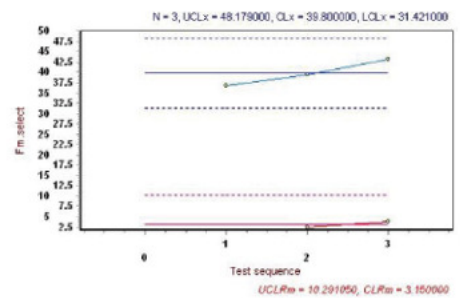


1

Histogram



Control Chart



Tested By:

Approved:

2

*Cometech reserves ultimate modification right of product specification.

COMETECH TESTING MACHINES CO.,LTD.

No.49,Ln,39,Lianucn Rd, Fengyuan Dist, Taichung City420,Taiwan

Tel:886-4-25368881 / Fax:886-4-25368883

E-mail: sales@come-tech.com.tw

URL: <http://www.come-tech.com.tw>

