

QC-506M1F (20kN)

Computerized Tensile (compression) testing machine

Standard

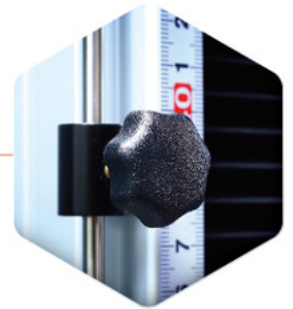
ISO 7500-1, ASTM E4, ASTM D-76, DIN5122, JIS B7721/B7733, EN 1002-2, BS1610, GB T228

Industry

Rubber, Plastic, Paper, Textile, Metal, Wood, Tape, Electronics, Packaging, Medical, Architecture



Common Joint for Both Tensile and Compression Test



Limit Switch



Up and down button



Jog controller

Description

This double-columned bench type model has a practical test space and stroke, not only suitable for large specimens but also for environmental testing. The machine is equipped with servo motor and ball screw with maximum capacity 20KN. Test stroke varies from the dimension of sample; with different sorts of grips, diverse tests are available. This model is compatible with Windows 7/8/10. It can perform tensile compression, bending, peeling, hold tensile (compression) tests, and so on. The software is user-friendly in different languages. Units can be chosen between metric or imperial; real-time graphs show a complete analysis of the test; data can be saved as test report for further evaluation. This machine can be operated in stand-alone mode for a quick access to test data.

Specification

Model	QC-506M1F		QC-506M1F (Extended)
Maximum capacity	20 kN		
Units	Force : gf, kgf, lbf, N, kN, ozf, tonf(SI), ton(long), tonf(short) Pressure : Kpa, Mpa, psi, bar, mm-Aq, mm-Hg		
Force resolution	31 bits		
Force precision	1/50,000		
Test stroke (w/o grip)	800mm	1200mm	
Stroke resolution	0.0001mm		
Space between columns	425 mm (550mm, 680mm, 800mm optional)		
Rigidity	2200 kgf/mm		
Speed range	0.2 ~ 830mm/min (adjustable by software)		
PC-Port	RJ45(TCP/IP) [software optional]		
Sampling rate	400Hz (Max.)		
Motor type	Servo motor		
Hardware safety protection	Upper limit, lower limit, emergency stop button		
Feature	<ul style="list-style-type: none"> ※ Automatic reading of load cell's information ※ Automatic reading of displacement sensor's information ※ External analog input (voltage or current) ※ Protection from overload 		
Power Supply	Single phase 200 - 240VAC, 5A		
Dimension	91 x 58 x 148 cm	95 x 58 x 190 cm	
Weight	145 kg	170 kg	

Optional accessories - Extensometer



QC-557 Short extensometer

For samples with elongation below 50%

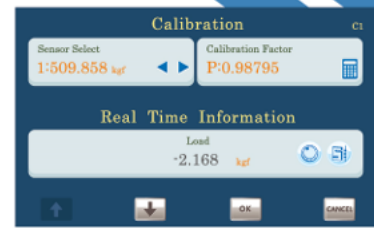


QC-551 Long extensometer

For samples with elongation above 20%

Optional accessories - Display

- A 7-inch TFT colored touch screen
- Chinese, English, Japanese, available
- Force, stress, torque, displacement, time are indicated
- Test setting: Test speed, direction, automatic return, machine stop at break
- Data analysis: Maximum force, interval force, force at break, etc.
- Protection from excessive test stroke, capacity and time
- Up to 50 data can be saved by USB
- It can be restored to factory settings.
- It can be calibrated in stand-alone mode
- Metric/imperial units adjustable
- Supports various signals



Real Time Information

Load: -2.168 kgf

	Load	Max. Load	Disp.
	100.000	100.000	200.000
Time	Max. Load	Max. Displacement	Strength
60.000	kgf	mm	kgf/mm
	Elongation %		
1	10.000	10.000	10.000
2	10.000	10.000	10.000
3	10.000	10.000	10.000
4	10.000	10.000	10.000
5	99.000	999.000	9999.000
6			



Software

- It is operated by keyboard and mouse; grip position is controllable by up/down button
- Adjustment of X-Y axis on the graph: curves' point marking, interval, slope, etc.
- Different test patterns available: Hold tensile, special setting of grip movement
- TCP / IP interface (two-way transmission). Machine can be controlled by PC
- Test setting can be saved as module to reduce mistake and errors
- Available in Chinese, English, Japanese, Korean, Spanish, Polish
- Multiple test data can be shown simultaneously on the software
- Tensile, compression, bending, peeling, spring tests available
- The software can show data, graphs or both at the same time
- Compatible with Window 7/8/10
- Sampling rate up to 400Hz
- The software supports various I / O signals
- Unit can be chosen between metric or imperial
- The data table can be modified based on user's preference
- Data can be renamed and formula can be created
- Data processing: store, call, list, statistical comparison, etc.
- Protection from excessive test stroke, capacity and time
- Sample specification can be saved as module for quick use
- Upper and lower limits can be selected to access key data



Peeling Test Report



Date: 2018/02/1
Time: 10:39:39

Company Information

Name: Cometech Testing Machines Co., Ltd
Address: No.49, Ln. 39, Lianucn Rd, Fengyuan Dist, Taichung City, 42062 Taiwan(R.O.C)
E-mail: sales@come-tech.com.tw
Tel: +866-4-25368881
Fax: +866-4-25368883

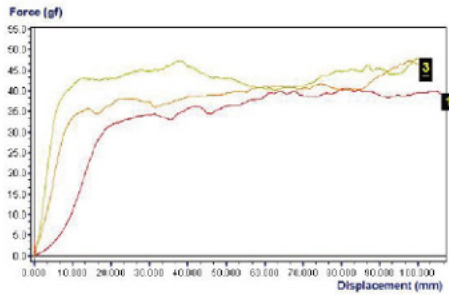
Specification

Test Speed: 300 mm/min Width: 18.63 mm

Data Table

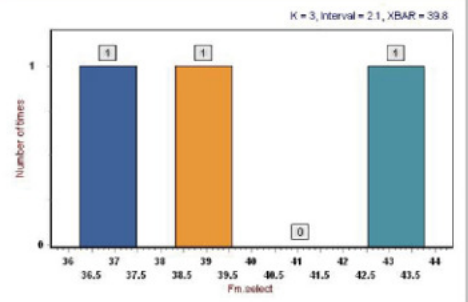
Item1	Fm.select	Fmax.select	F.peak	Fm.select/W	Peak.avg
Unit	gf	gf	gf	N/mm	gf
1	36.3	43.2	36.9	9.519	43.5
2	39.3	41.7	40.5	9.521	43.5
3	43.2	47.3	43.9	9.520	45.7
Mean	39.6	43.1	40.5	9.521	43.0

Graph

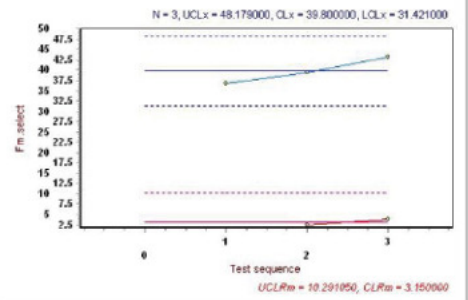


1

Histogram



Control Chart



Tested By:

Approved:

2

*Cometech reserves ultimate modification right of product specification.

COMETECH TESTING MACHINES CO.,LTD.
No.49,Ln,39,Lianucn Rd, Fengyuan Dist, Taichung City420,Taiwan
Tel:886-4-25368881 / Fax:886-4-25368883
E-mail: sales@come-tech.com.tw
URL: <http://www.come-tech.com.tw>

