

Tianshu Series

Handheld Thermal Camera C200Pro



See Difference

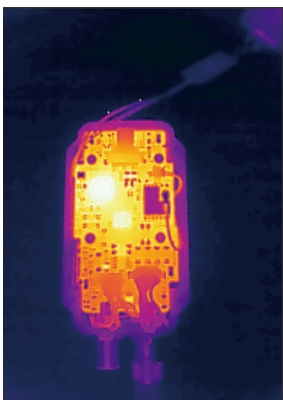


InfiRay Tianshu C200 Pro is a handheld thermal camera with an upgraded thermographic detector. Operating efficiency is upgraded: InfiRay self-developed high-performance 12μm infrared detector, 256×192 high resolution, and 0.04°C temperature resolution are C200 Pro's "trump cards" to provide infrared thermal images of rich details and accurate temperature measurement. With pro-grade 2,000,000-pixel visible light and low lag, it can meet professional work requirements easily. What's more, it features timed photographing, 15h long battery life, plug-and-analyze through USB. Tianshu C200 Pro, powerful upgrade of the detector.

1 Powerful Upgraded Detector

- **Pro-grade high-performance infrared detector**

With pro-grade 256×192 resolution, thermal sensor, 2m Visual camera and pro-grade low lag, it can meet professional requirements easily. Matrix III intelligent image algorithm optimizes the short-distance imaging. With 56 ° wide FOV, it provides efficient short-distance details observation, to get clear thermal images with rich details.

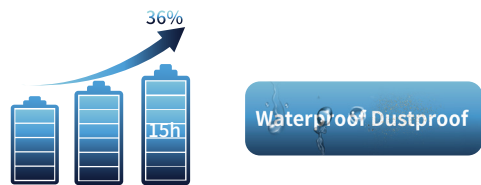


- **Pro-grade built-in thermal imaging functions**

For professional users, Interval Snapshot and automatic alarm snapshot function were added; the number of photos to take and the time interval can be set, and meanwhile, the automatic alarm and snapshot can be set. To automatic record and trace of abnormal temperature, real-time record of equipment status separated from PC, target temperature trend, ultra-long battery life, external power supply, and quick deployment.

- **Pro-grade easy-to-use thermal imager**

Industry leading 15h battery life, increased by 36% compared with the last generation. IP54 waterproof and dustproof and 2m drop protection make it easier to use: even in a complicated environment, it can still provide crisp and clear thermal images.



- **Pro-grade software support**

For professional users, the analysis function has been greatly upgraded: support plug-and-analyze through USB on PC. It supports not only real-time screen projection and offline image analysis but also full-frame real-time point/line/area temperature analysis. One-click report generation, helping professional users output infrared inspection results and work efficiently



2 Professional

- **0.04°C temperature resolution and $\pm 2^\circ\text{C}$ measurement accuracy**

With its ultra accuracy & NETD performance, C200 Pro can easily fit in your high-accuracy inspection tasks, such as material defect detection and precise component testing.

- **-20°C - +550°C wide measurement range**

Meet the demands to inspect different industrial temperature targets. C200 Pro can meet all the requirements such as building HVAC and vehicle maintenance.



- **4 modes + 7 palettes**

4 popular modes with 7 palettes provide plenty combinations of on-device thermal image display, to support various complicated observation tasks of professionals.

- **Focus-free design and 56° wide FOV**

The focus-free lens, 56° wide FOV, and 256×192 high resolution ensure that the area you cannot approach can be inspected at a safe distance, and meanwhile to get crisp thermal images with rich details.



3 Solid · Reliable

- **Continue the famous design appearance**

Inherited from the last generation, the camera trigger has a perfect radius with a non-slip better touch. The boxing glove appearance and lower gravity center makes it so handy & comfortable to hold in your daily use.



- **IP54 + 2m-drop protection**

It has IP54 waterproof and dustproof performance. With drop protection, even if it falls from 2m height, it still can provide clear thermal images.



Waterproof



Dustproof



2m-drop protection

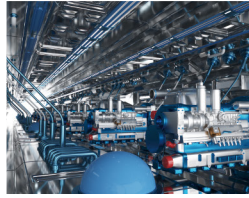
- **Handheld or Fixed**

Besides handheld operation, it also has a 1/4 common threaded at the bottom, via which it can be fixed on a tripod for operation. With upgraded Real-time USB Radiometric transfer function & InfiRay's professional software, C200 Pro can perform even more complicated temperature Analysis & monitoring tasks.

Application Fields



Electrical maintenance



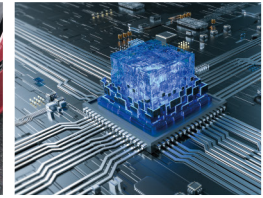
Equipment inspection



HVAC



Vehicle maintenance



Product R&D

Main Specifications

Model	C200Pro
Detector type	Uncooled VOx IRFPA
IR resolution	256×192
Pixel pitch	12μm
Thermal sensitivity	<40mK
Focal length	3.2mm
FOV	56°×42°
IFOV	3.8mrad
Focus mode	Focus free
Measurement function	Center spot/Max./Min./3 Self-defined spots
Temperature measurement range	-20~150°C, 100~550°C
Measurement accuracy	±2% or ±2°
Temperature measurement unit	Celsius, Fahrenheit, Kelvin
Emissivity settings	Variable from 0.01 to 1.0
Image mode	Thermal, dual-spectrum fusion, visible light, PIP
Color palettes	White hot, Black hot, Iron, Lava, Rainbow, Rainbow HC, Black red.
Temperature alarm	Above alam /belwo alarm in full frame
Alarm type	Image alarm and LED alarm
Image data	Image and temperature data (self-defined format)
Language	English, Japanese, Polish, Russian, Korean, Hungarian, Brazilian Portuguese, German, French, Spanish, Italian, Turkish, Traditional Chinese
Video transmission	Support real-time USB video preview and tempareture analysis
PC analysis software	Support
Illuminator	LED supplement illuminator
Screen size	2.8" LCD (320×240)
Memory card	16GB MicroSD card
Battery type	Rechagable Li-ion battery
Power interface	USB Type-C
Boot time	30S
Charging Time	abuout4H(shutdown)
Operating Time	15H
Power Management	Variable (Auto off, 5min, 10 min, 20 min)
Tripod Mounting Hole	Support
Operating Temperature Range	-10~+50°C
Storage Temperature Range	-20~+60°C
RH	10% ~ 95%, no condensaion
Encapsulation/Drop	IP54 2m
Camera Dimension (L×W×H)	237×75×92mm
Weight	520g
Accessories	USB cable,16GB SD card, user documentation, portable bag, certificate of qualification , Calibration Certificate