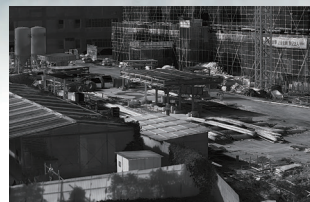




PC4 Series

Dual-Spectrum PTZ Camera

PC4 series is a compact solution that integrates HD visible light, infrared thermal imaging and PTZ system, with intelligent functions such as fire point detection, tripwire intrusion, and regional intrusion detection inside. It provides all-weather, 24/7 surveillance for scenarios such as border/coastal surveillance, forest fire prevention and critical area protection.



12μm Uncooled Infrared Detector

Adopting the latest 12μm uncooled infrared detectors, integrated with advanced infrared imaging algorithms for better image quality.

Long-Range Detection

Supports 75mm and 100mm fixed-focus, as well as 25~75mm continuous zoom infrared lens to meet long-range detection needs.

Intelligent Video Analysis

Support tripwire/intrusion detection, as well as intelligent detection of fire point.

Dual-Spectrum Imaging

All-weather, 24/7 security monitoring with dual thermal&visible light imaging.

Intelligent Fire Detection Algorithm

Features an integrated intelligent fire detection algorithm for efficient and accurate monitoring, as well as reduced false alarms.

Platform Integration

Support ONVIF, provide SDK&demo for development; provide NVR and VMS software for application.

Specifications

Technical Specifications	PC464A1	PC4S4A1
Thermal Module		
Detector Type	VOx, uncooled FPA detector	
Spectral Range	8~14μm	
NETD	≤40mK(@25°C,F#1.0,25Hz)	
Resolution	640×512	1280×1024
Pixel Pitch	12μm	
Focal Length	25~75mm/75mm/100mm	25~75mm/75mm
Optical Module		
Sensor	1/1.8" 4-megapixel CMOS image sensor	
Resolution	2688×1520	
Focal Length	6~336mm/6~360mm	6~300mm
PTZ		
Pan	360° continuous, 0.1°~100°/s	
Tilt	-90°~+40°, 0.1°~60°/s	
Scan Mode	Preset/Pattern Scan/Patrol Scan/ Linear Scan/Panorama Scan	
Smart Function		
Fire Detection	Support	
VCA	Support Line Crossing&Intrusion detection	
Linkage Action	Video/ Snapshot/Email/Alarm output	
System Interface		
Power	DC 24V±15%	
Network	1×RJ45 10M/100M self-adaptive interface	
Audio Input	1× input	
Audio Output	1×output	
Alarm Input	7× input	
Alarm Output	2×output	
Storage Interface	Micro SD memory (maximum 256G)	
RS485 Interface	1×RS485	
General		
Work Environment	-40°C~+70°C; <90%RH	
Protection	IP66 Standard; TVS 6000V Lightning Protection, Surge Protection and Voltage Transient Protection	
Power Consumption	75W	
Dimensions (mm)	250×472×360	
Weight	14kg	

Application Scenarios



Forest Fire Prevention



River Monitoring



Border and Coastal Surveillance



Critical Infrastructure Protection

RayThink Technology Co., Ltd.

✉ sales@raythink-tech.com

☎ +86-19806191838

🌐 www.raythink-tech.com

📍 Room 3002, Building 2, No.5 Wanshoushan Road, Fulaishan Street, Yantai Area of China (Shandong) Pilot Free Trade Zone

■ This manual is illustrative only. Technical specifications are subject to change without prior notice.